



# Flow Monitoring - Spontaneous Returns of Undocumented Afghans from Pakistan

27th October - 9th November 2019



## Overall returnees through **Torkham and Chaman** since January 2019 **16,027**

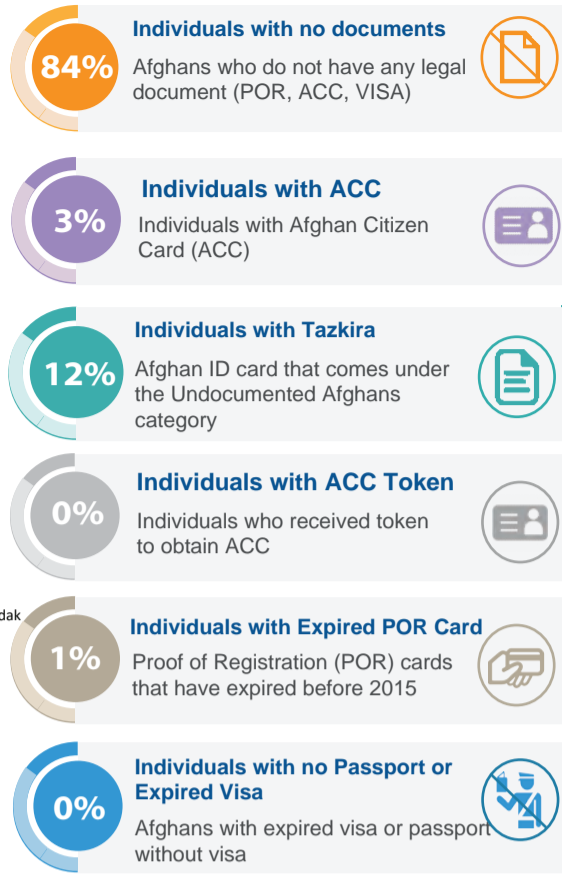
For this reporting period **185** interviews were conducted comprising of the following categories

**82.2%** \*Undocumented families

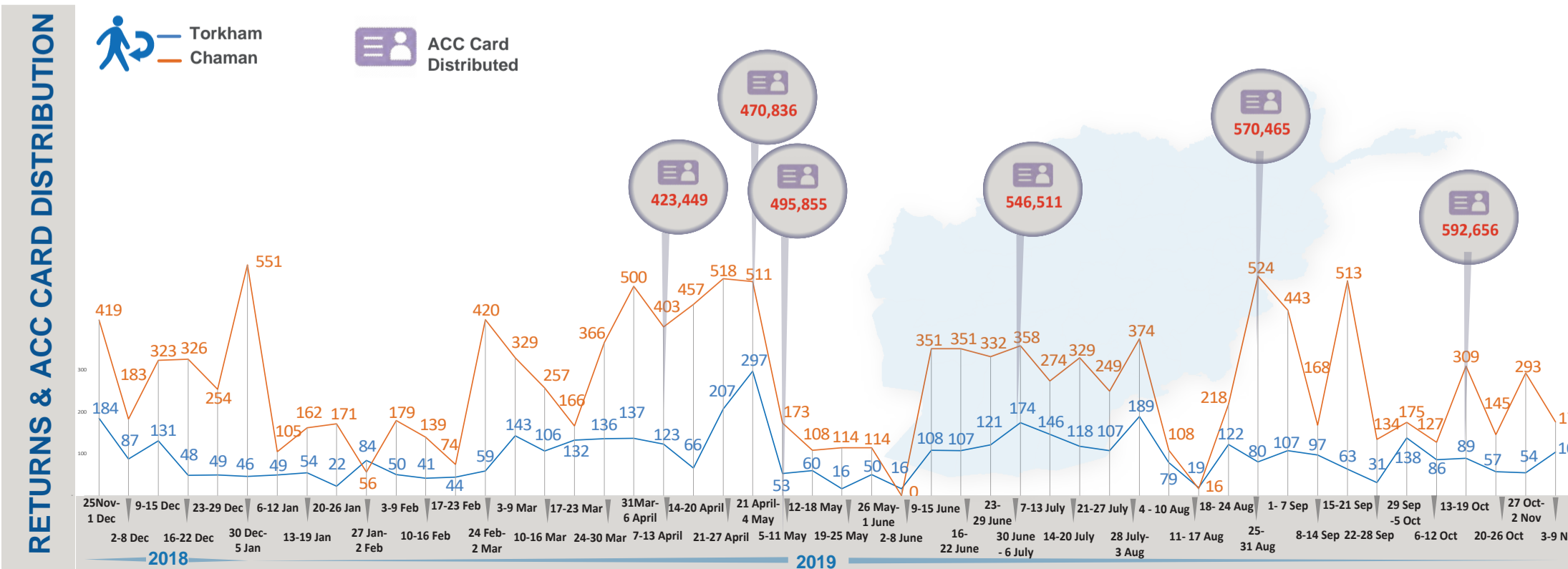
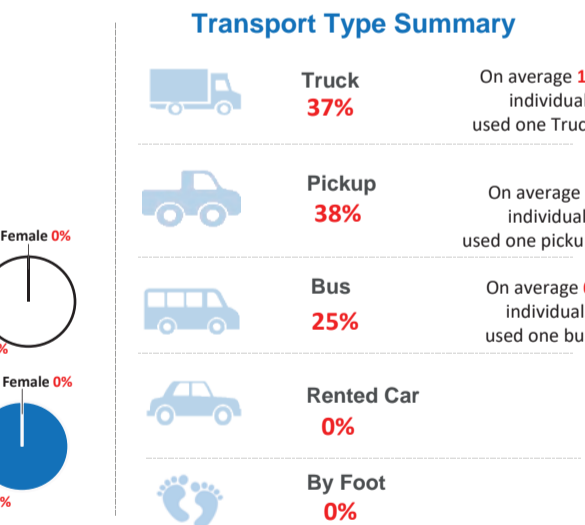
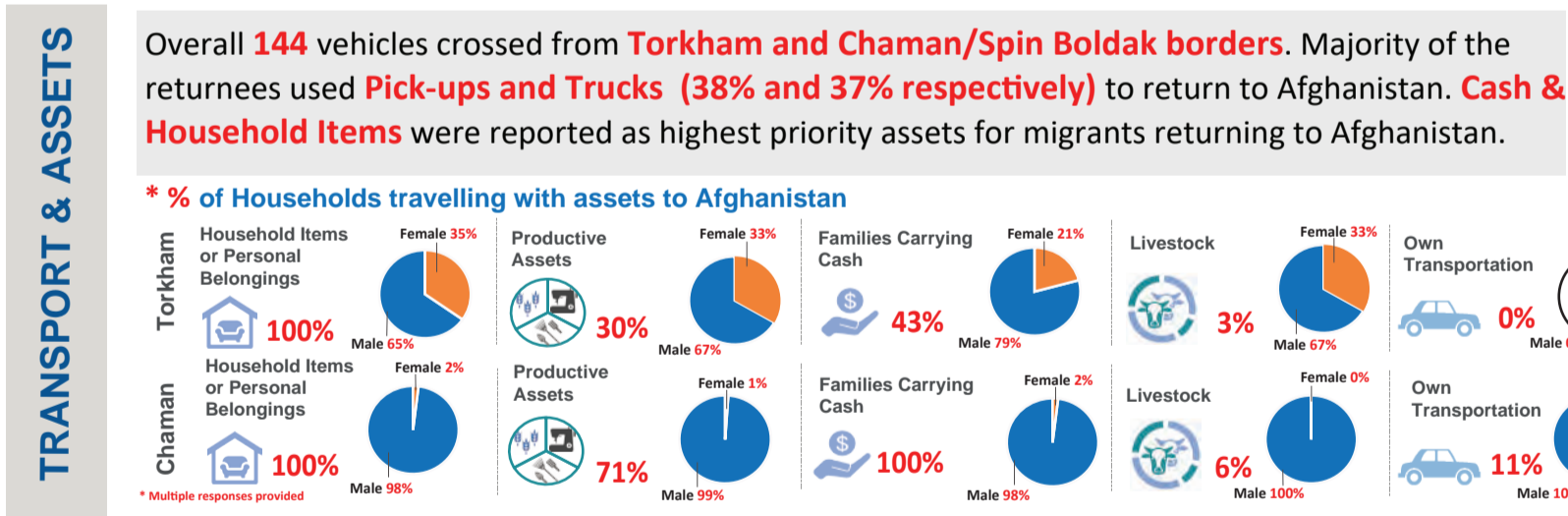
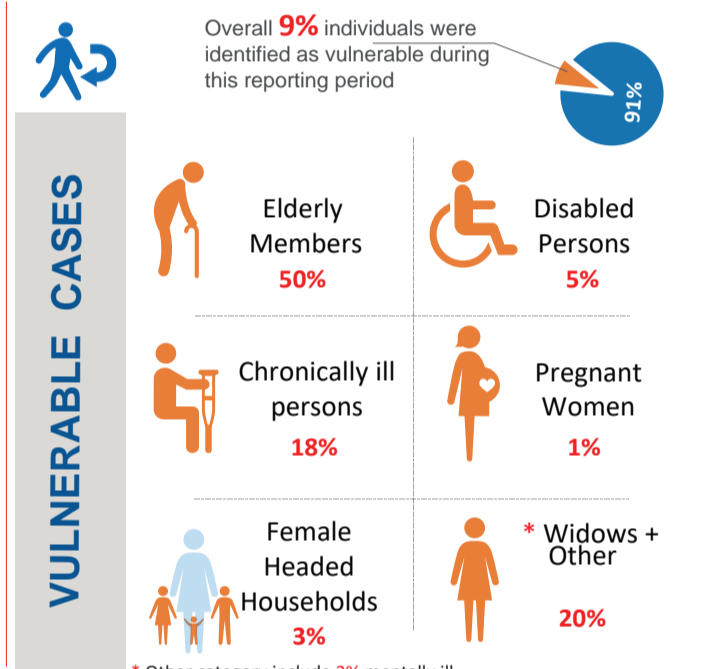
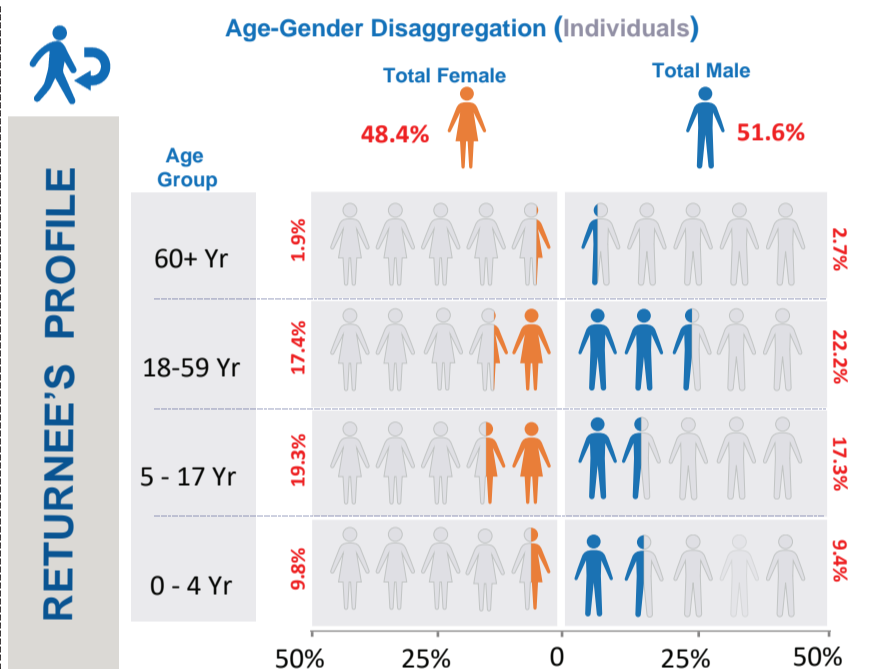
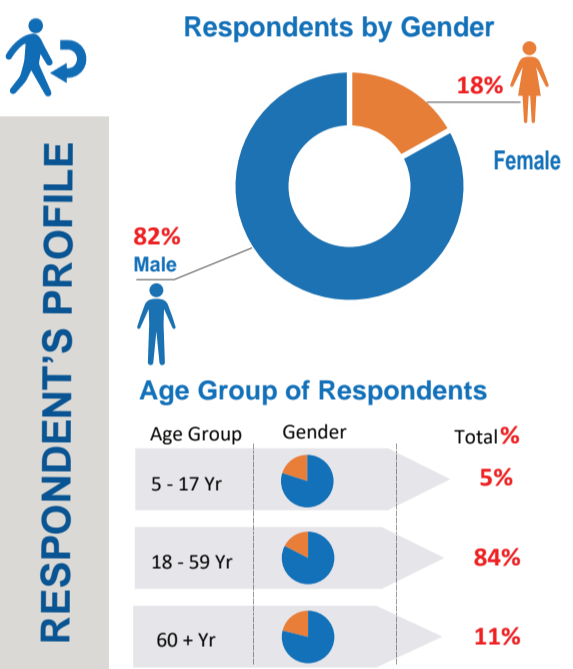
**16.7%** \*Undocumented individuals travelling with documented families

**1.1%** \*Undocumented individuals travelling alone

\* Interviews were conducted at both transit points, Torkham and Chaman/Spin Boldak



**627 Undocumented Afghan** individuals returned to Afghanistan through the **Torkham and Chaman/Spin Boldak border**. **158** individuals used the **Torkham border** crossing while **469** individuals crossed through **Chaman/Spin Boldak border** crossing.





PUSH AND PULL FACTORS RECORDED BASED ON RETURNEES RESPONSE

**Push factors:** Factors which discourage Undocumented Afghan nationals from staying in host country.

### PUSH FACTORS

- Economic Factors
- Afraid of Being Deported
- Camp Closure
- Returning Home
- Undocumented

### PULL FACTORS

- Improvement in Security Situation
- Availability of Assistance in Afghanistan
- Reunion with Family and relatives
- Own Country

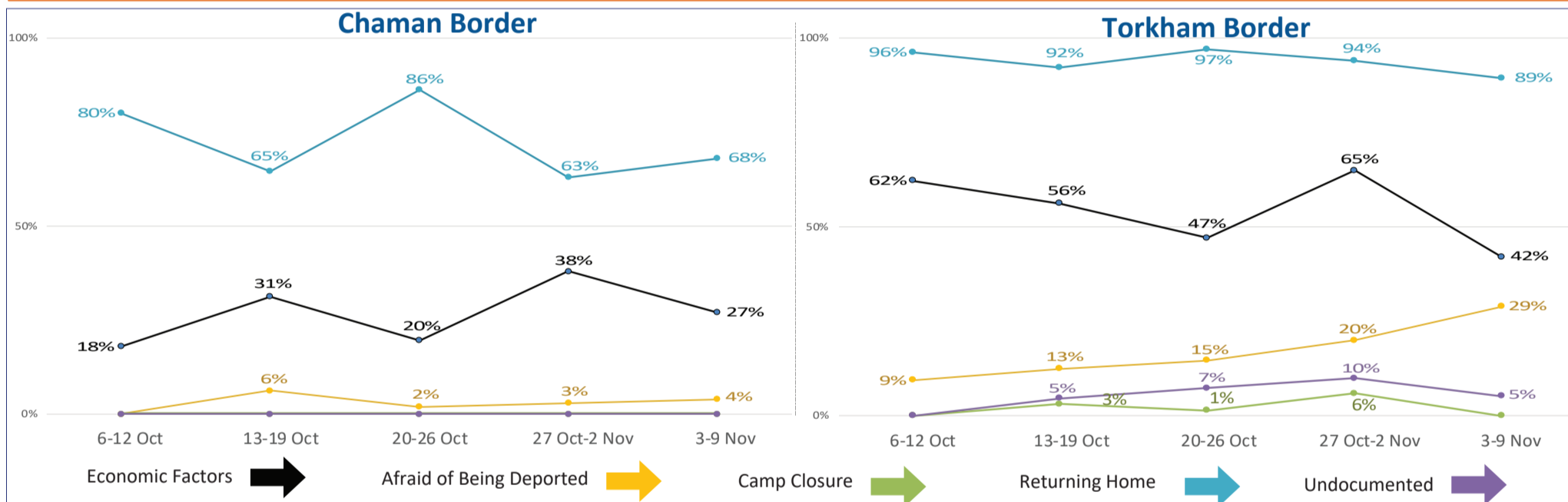
**Pull factors:** Factors which encourage Undocumented Afghan nationals to return to their country of origin.

**In Torkham, 'Returning Home'** is trending downwards and **89%** of the respondents cited this as a push factor (decrease of 8 percentage point compared to the last reporting period). **'Economic Factors'** is trending downwards and **42%** of the respondents cited this as a push factor (decrease of 5 percentage points compared to the last reporting period). **'Afraid of Being Deported'** increased to **29%** (increase of 14 percentage points compared to the last reporting period). **'Lack of Documentation'** decreased to **5%** (decrease of 2 percentage points compared to the last reporting period). Whereas **none** of the respondents at **Torkham** reported **'Camp Closure'** as a push factor.

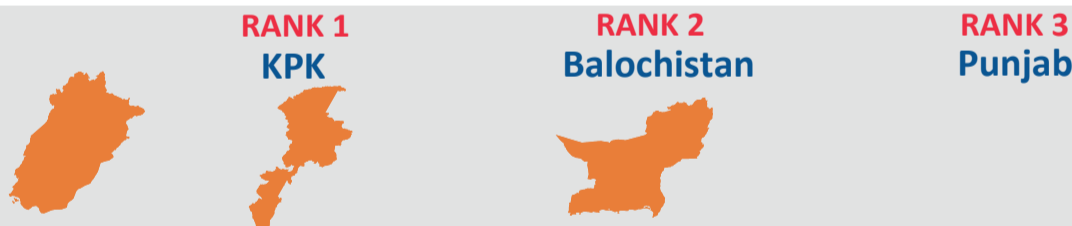
**In Chaman, 'Returning Home'** is trending downwards and **68%** of the respondents cited this as a push factor (decrease of 18 percentage points compared to the last reporting period). **'Economic Factors'** is trending upwards and **27%** of the respondents cited this as a push factor (increase of 7 percentage points compared to the last reporting period). **'Afraid of Being Deported'** is trending upwards and **4%** of the respondents cited this as a push factor (increase of 2 percentage points compared to the last reporting period). Whereas **none** of the respondents at **Chaman** reported **'Lack of Documentation'** and **'Camp Closure'** as a push factor.

The indicator rated as the main pull factor for both border crossing points was **'Own Country'**. This was reported by **95%** of the respondents at **Torkham** and **59%** of the respondents at **Chaman**. The second highest concern was **'Reunion with Family / Relatives'** which was reported by **74%** of the respondents at **Torkham** and **36%** of the respondents at **Chaman**. **8%** of the respondents at **Torkham** and **4%** of the respondents at **Chaman** reported **Availability of Assistance in Afghanistan'**. Furthermore, **none** of the respondents at **Torkham** and **Chaman** reported **'Improvement in Security Situation'** as a pull factor.

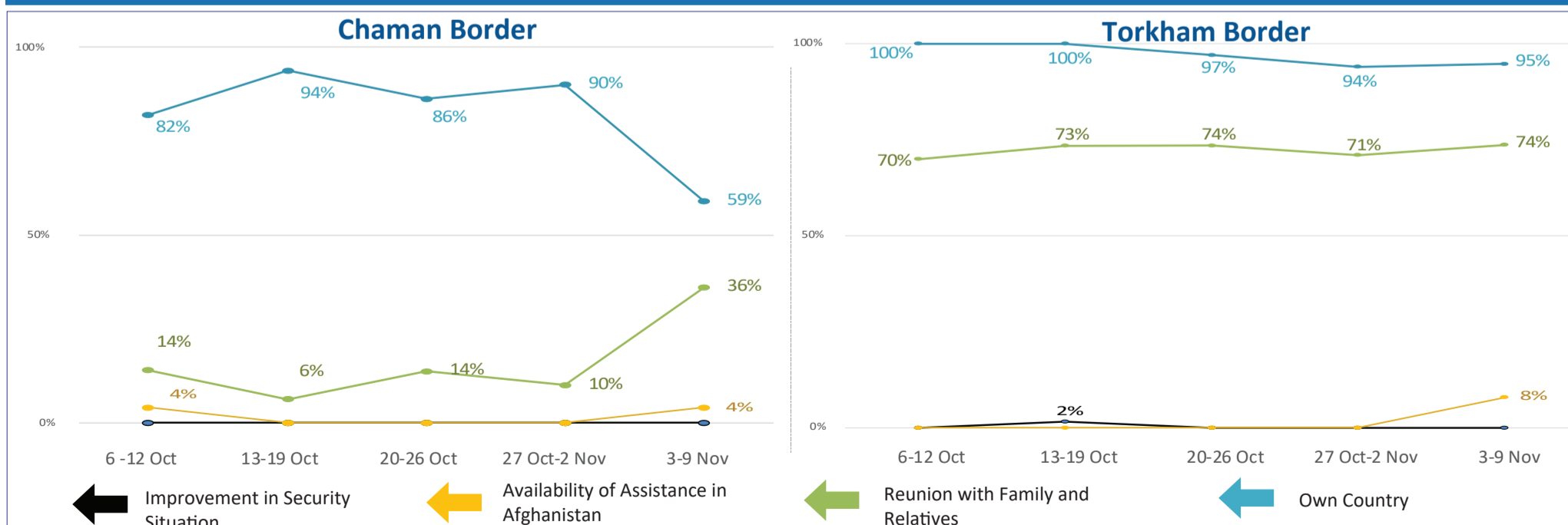
## PUSH Factors (Weekly Trend)



**Top three ranked provinces in Pakistan** based on the PUSH Factors' responses are.



## PULL Factors (Weekly Trend)



**Top three ranked provinces in Afghanistan** based on the PULL Factors' responses are.





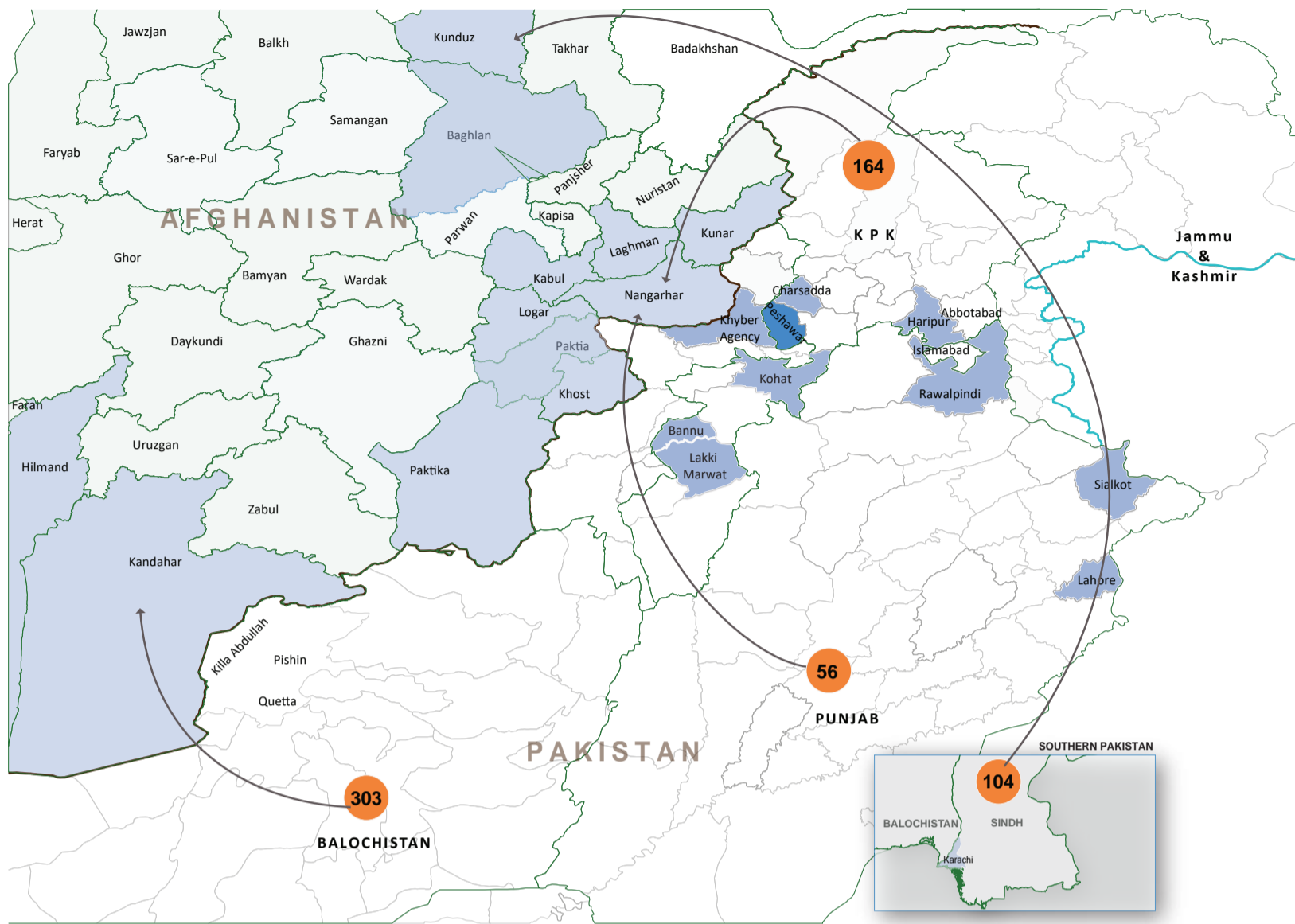


# Flow Monitoring - Spontaneous Returns of Undocumented Afghans from Pakistan

27th October- 9th November 2019

HIGH RETURN AREAS

## Population Movement Trend for Spontaneous Returns of Undocumented Afghans from Pakistan



**AFGHANISTAN**

The **top 5 destination** provinces for returns are

- **Kandahar (46%)**
- **Nangarhar (19%)**
- **Kunduz (10%)**
- **Kabul (7%)**
- **Kunar (4%)**

**PAKISTAN**

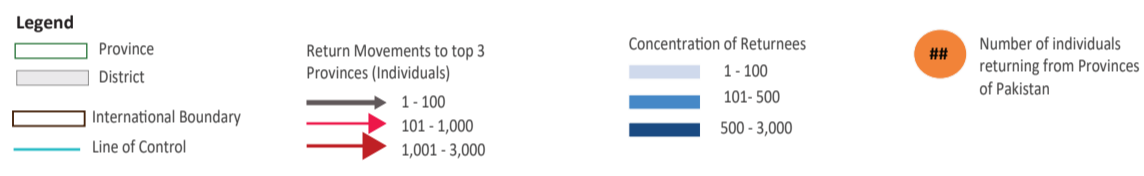
The largest **proportion of returns** are from:

- **Balochistan (48%)**
- **Khyber Pakhtunkhwa (26%)**
- **Sindh (17%)**
- **Punjab (9%)**

Data Source: Population Census Organization, UNOCHA

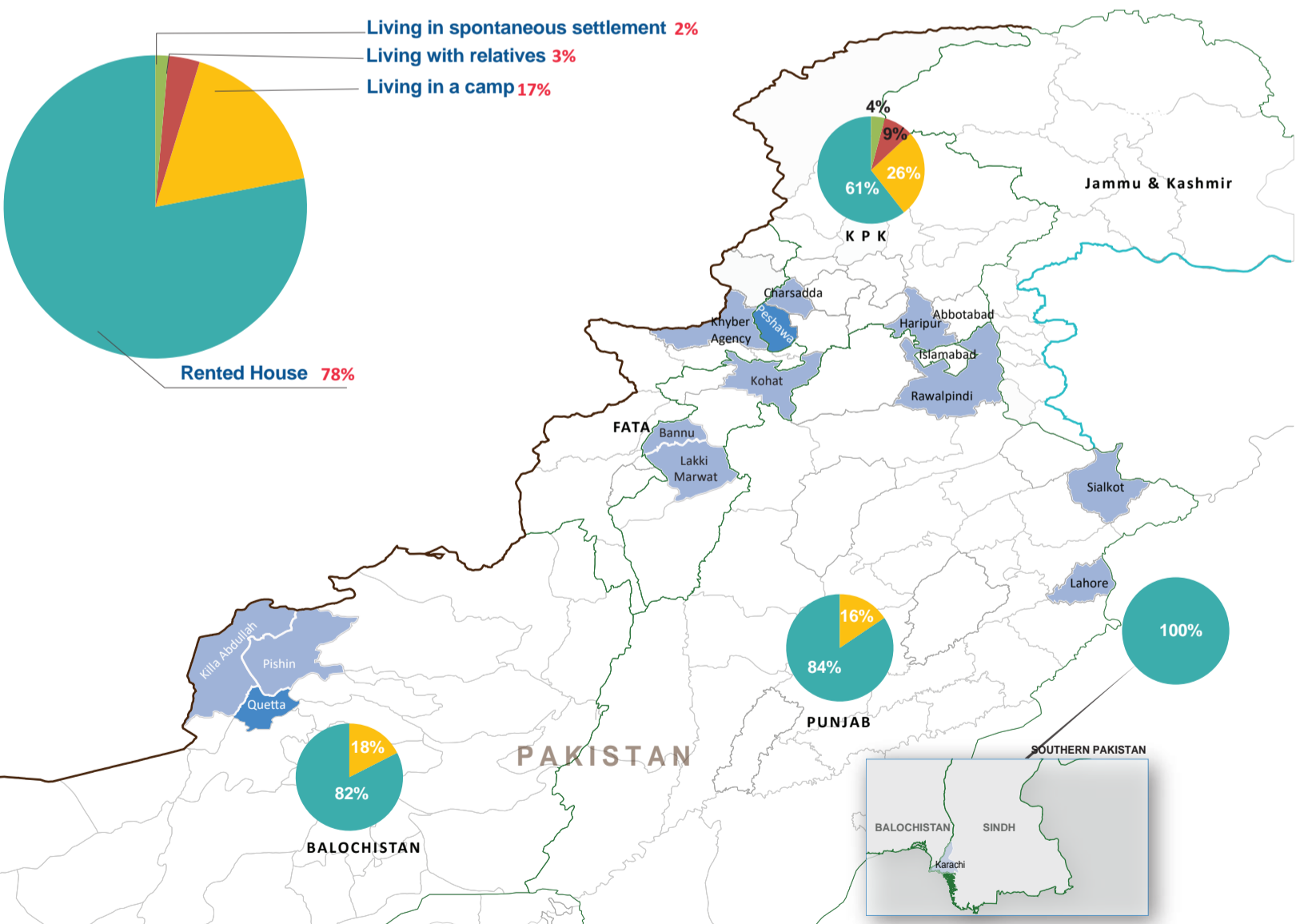
**Disclaimers:** The designations employed and the presentation of material on this map do not imply the expression of any opinion whatsoever on the part of the Secretariat of the United Nations concerning the legal status of any country, territory, city or area or of its authorities, or concerning the delimitation of its frontiers or boundaries. The dotted line represents approximately the line of control between India and Pakistan. The final status of Jammu and Kashmir has not yet been agreed upon by the parties.

Please note: The boundaries and names shown and the designations used on this map do not imply official acceptance or endorsement by IOM.



LIVING CONDITIONS IN PAKISTAN

## Current Living Conditions of Undocumented Afghans in Pakistan



**Overall, 78%** of Undocumented Afghan returnees from this week reported living in **rented houses**, **17%** in 'Camps', **3%** 'living with relatives' whereas the remaining **1%** reported living in 'Spontaneous settlement'

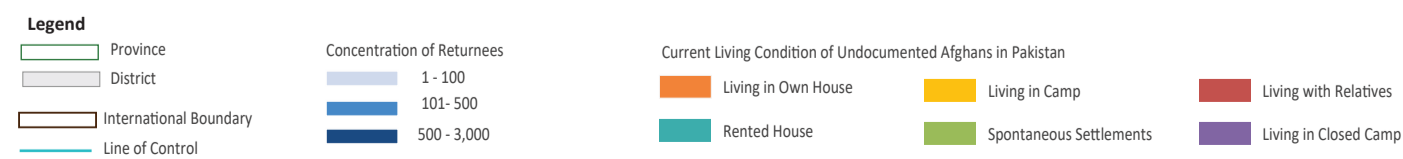
There are differences at the provincial level where for example in **Sindh 100%**, in **Punjab 84%**, in **Balochistan 82%** and **KP 61%** of Undocumented Afghan returnees reported living in 'rented houses'.

In **KP**, **26%** of the Undocumented Afghan returnees reported living in 'Camp' compared to **18%** in **Balochistan**, **16%** in **Punjab** and **none** in **Sindh**.

Data Source: Population Census Organization, UNOCHA

**Disclaimers:** The designations employed and the presentation of material on this map do not imply the expression of any opinion whatsoever on the part of the Secretariat of the United Nations concerning the legal status of any country, territory, city or area or of its authorities, or concerning the delimitation of its frontiers or boundaries. The dotted line represents approximately the line of control between India and Pakistan. The final status of Jammu and Kashmir has not yet been agreed upon by the parties.

Please note: The boundaries and names shown and the designations used on this map do not imply official acceptance or endorsement by IOM.



\* The Response for "Own House" relates to the fact that land/house is bought in the name of Pakistani relatives.